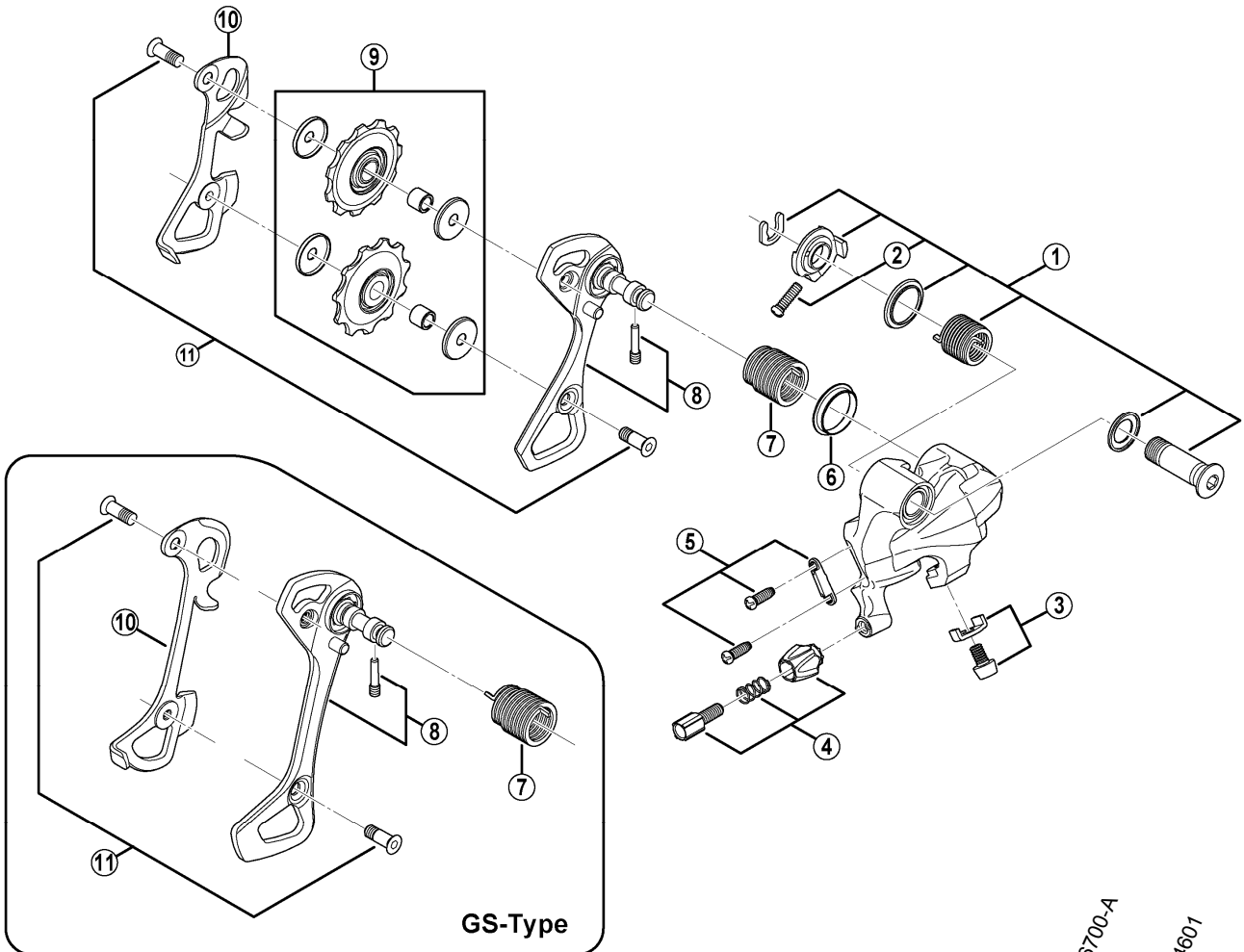


SHIMANO 105 Rear Derailleur (10-speed)

RD-5701-S (SS/GS) Silver Version (Short Cage/Long Cage)

RD-5701-L (SS/GS) Black Version (Short Cage/Long Cage)



RD-6700-A

RD-4601

ITEM NO.	SHIMANO CODE NO.	DESCRIPTION	INTERCHANGEABILITY		
1	Y5XV98010	B-Axle Assembly (SS-type)	B	A	
	Y5XV98020	B-Axle Assembly (GS-type)		A	
2	Y55625080	B-Tension Adjusting Screw (M4 x 13.5)	A	A	
3	Y5XH98020	Cable Fixing Bolt (M5 x 8.5) & Plate	A	A	
4	Y5XH98030	Cable Adjusting Bolt Unit	A	A	
5	Y5X998020	Stroke Adjusting Screws (M4 x 11.5) & Plate	A	A	
6	Y5UC14000	P-Seal Ring		A	
* 7	Y5XV14000	P-Tension Spring (SS-type)		A	
	Y5XV17000	P-Tension Spring (GS-type)		A	
8	Y5XV98030	Outer Plate & Plate Stopper Pin (Silver/SS-Type) for RD-5701-S-SS			
	Y5XV98040	Outer Plate & Plate Stopper Pin (Black/SS-Type) for RD-5701-L-SS			
	Y5XV98050	Outer Plate & Plate Stopper Pin (Silver/GS-Type) for RD-5701-S-GS			
	Y5XV98060	Outer Plate & Plate Stopper Pin (Black/GS-Type) for RD-5701-L-GS			
9	Y5XH98120	Tension & Guide Pulley Set		A	
10	Y5XH08000	Inner Plate (SS-type)	A		
	Y5XV09000	Inner Plate (GS-type)			
11	Y5V598140	Pulley Bolt 12.5mm (2 pcs.)		A	

A: Same parts.

B: Parts are usable, but differ in materials, appearance, finish, size, etc.

Absence of mark indicates non-interchangeability.

Nov.-2012-3297A

© Shimano Inc. A

Specifications are subject to change without notice.

SHIMANO