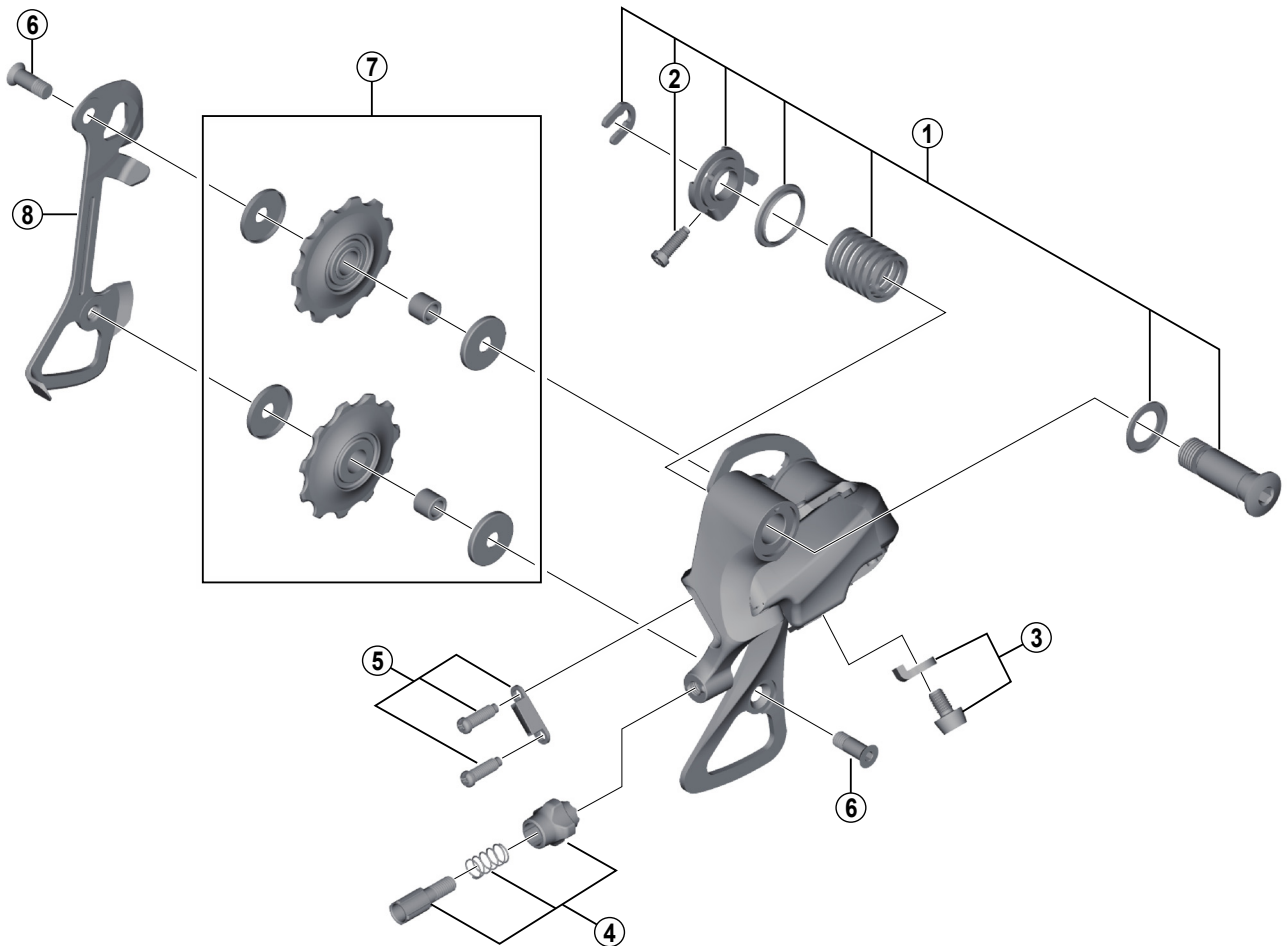


# CLARIS Rear Derailleur RD-R2000-SS / GS (8-speed)



RD-R3000

ITEM NO.	SHIMANO CODE NO.	DESCRIPTION	INTERCHANGEABILITY	
1	Y2B098010	B-Axle Assembly		
2	Y556250D0	B-Tension Adjusting Screw	A	
3	Y2B098020	Cable Fixing Bolt & Plate	A	
4	Y5XG98040	Cable Adjusting Bolt Unit	A	
5	Y5Y498030	Stroke Adjusting Screws (M4 x 13) & Plate	A	
6	Y5XG16100	Pulley Bolt	A	
7	Y5TT98020	Tension & Guide Pulley Set	A	
8	Y5Z000090	Inner Plate (SS-Type)	A	
	Y5Z000080	Inner Plate (GS-Type)	A	

A: Same parts.

B: Parts are usable, but differ in materials, appearance, finish, size, etc.

Absence of mark indicates non-interchangeability.

Specifications are subject to change without notice.

Apr.-2017-4159

© Shimano Inc. I

# SHIMANO