

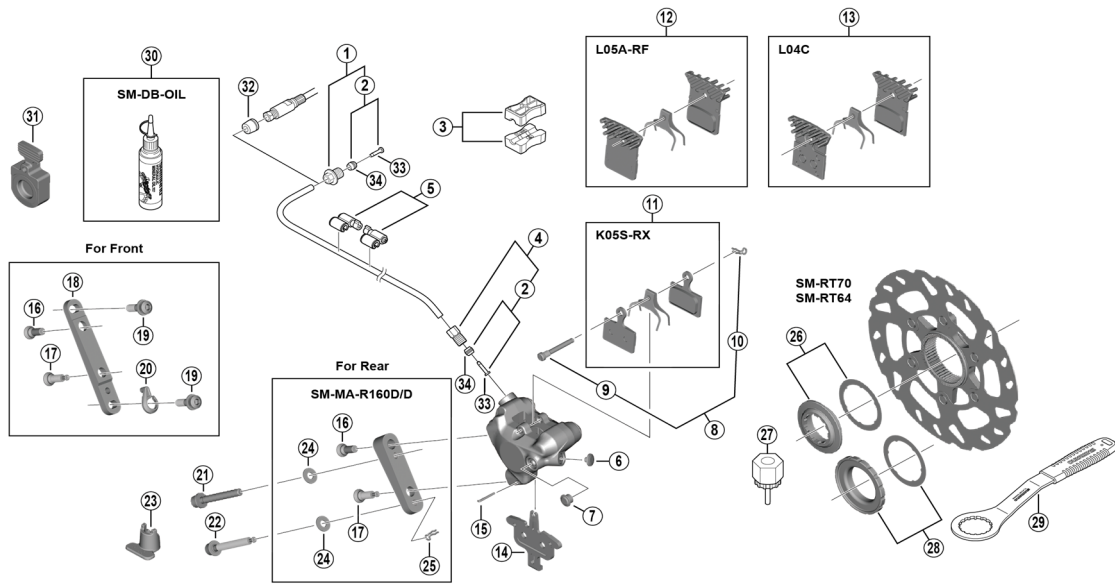
SHIMANO 105 Disc Brake

BR-R7170 Brake Caliper

SM-RT70 SM-RT64 Disc Rotor

SM-BH90-JK-SSR

SM-BH90-JK-SS Brake Hose



BR-R7170

ITEM NO.	SHIMANO CODE NO.	DESCRIPTION	INTERCHANGEABILITY
1	Y8RD98010	Flange flare nut unit (M9/black) for ST-R7170	A
	Y8RD98020	Flare nut unit (M8/silver) for ST-R9180	A
2	Y8JA98020	Olive and connector insert	A
3	Y8H198030	TL-BH61 Shimano original tool (2 pcs.)	A
4	Y8JA98010	Flare nut unit (M8/black)	A
5	Y83098040	SM-HANG Hose supporter A and B	A
6	Y2J706000	Bleed screw cap	A
7	Y2HW10000	Bleed boss cap	A
8	Y2GM98020	Pad axle and snap retainer	A
9	Y8EB12010	Pad axle	A
10	Y8J716000	Snap retainer	A
* 11	EBPK05SRXA	K05S-RX Resin pad and spring (pair)	A
	Y2GM98030		
* 12	EBPL05ARFA	L05A-RF Resin pad with fin and spring (pair)	A
	Y2EM98010		
* 13	EBPL05ARFBS	L05A-RF Resin pad with fin and spring (25 pairs)	A
	Y2EM98011		
* 13	IBPL04CMFA	L04C Metal pad with fin and spring (pair)	A
	Y8N398040		
14	Y8N218000	Pad spacer	A
15	Y8N207000	Screw fixing pin	A
16	Y2HW06010	Caliper fixing screw B2	A
17	Y8N206000	Caliper fixing screw B	A
18	Y8N230000	Front caliper mount bracket	A
19	Y8N204000	Caliper fixing screw A	A
20	Y8N205000	Snap ring	A
21	Y2J708000	Caliper fixing screw C2 for 10 mm rear mount thickness	A
	Y2J708050	Caliper fixing screw C2 for 15 mm rear mount thickness	A
	Y2J708010	Caliper fixing screw C2 for 20 mm rear mount thickness	A
	Y2J708020	Caliper fixing screw C2 for 25 mm rear mount thickness	A
	Y2J708030	Caliper fixing screw C2 for 30 mm rear mount thickness	A
	Y2J708040	Caliper fixing screw C2 for 35 mm rear mount thickness	A
22	Y8N208000	Caliper fixing screw C for 10 mm rear mount thickness	A
	Y8N208050	Caliper fixing screw C for 15 mm rear mount thickness	A
	Y8N208010	Caliper fixing screw C for 20 mm rear mount thickness	A
	Y8N208020	Caliper fixing screw C for 25 mm rear mount thickness	A
	Y8N208030	Caliper fixing screw C for 30 mm rear mount thickness	A
	Y8N208040	Caliper fixing screw C for 35 mm rear mount thickness	A
23	Y2HW12000	Screw length selector	A
24	Y8NU02000	Washer for R160 adapter	A
25	Y8NU03000	Snap retainer	A
26	Y8P898010	SM-RT70 Lock ring and washer	
	Y8KU98010	SM-RT64 Lock ring (black) and washer	
27	Y12009230	TL-LR15 Lock ring removal tool	
28	Y26L98030	SM-RT70 Lock ring and washer (external spline type)	
	Y24698030	SM-RT64 Lock ring and washer (external spline type)	
29	Y13098000	TL-FC36 Lock ring removal tool	
30	Y83998020	Mineral oil (100 ml)	A
	Y83998030	Mineral oil (500 ml)	A
31	Y2HW15000	Bleeding spacer	A
32	Y8H802000	Hose cover for easy hose joint system, not used with easy hose joint direct system	A
33	Y8JA98026	Connecting insert (100 pcs.)	A
34	Y8H298047	Olive (100 pcs.)	A

A: Same parts.

B: Parts are usable, but differ in materials, appearance, finish, size, etc.

Absence of mark indicates non-interchangeability.

Specifications are subject to change without notice.

Jul.-2022-4920A

© Shimano Inc. 1