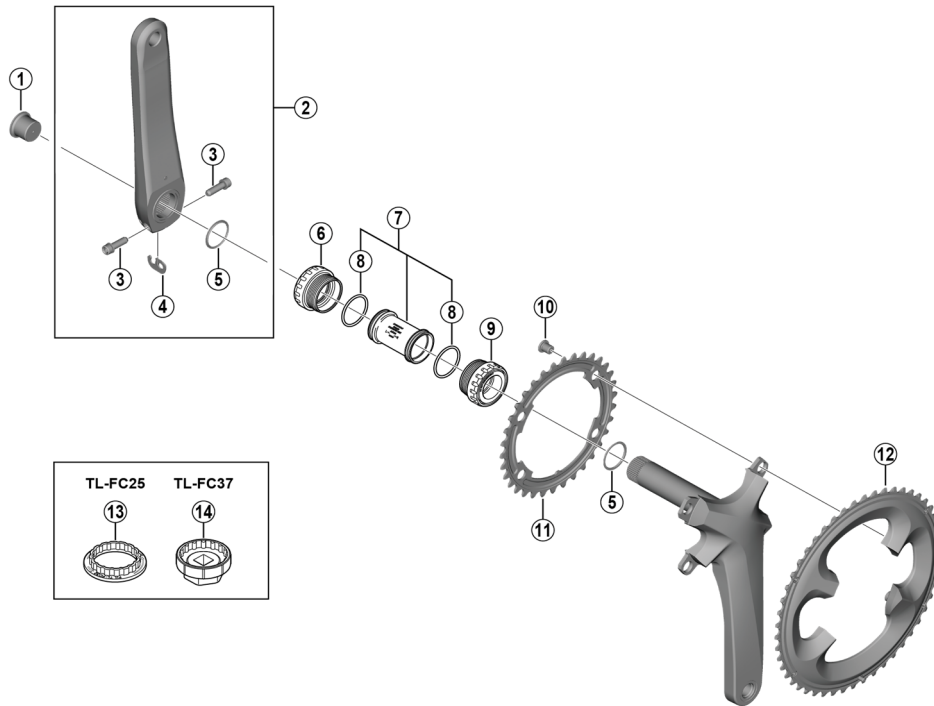


SHIMANO 105 Crankset
FC-R7000 Black / Silver
SM-BBR60



- Chaining teeth combinations: 50-34T/52-36T/53-39T
- Bolt circle diameter: 110 mm

FC-5800
FC-R6000

ITEM NO.	SHIMANO CODE NO.	DESCRIPTION	INTERCHANGEABILITY	
1	Y1P417000	Crank Arm Fixing Bolt	A	A
*	Y1WV98150	Left Hand Crank Arm Unit 160 mm (Black)		
*	Y1WV98160	Left Hand Crank Arm Unit 160 mm (Silver)		
	Y1WV98070	Left Hand Crank Arm Unit 165 mm (Black)	B	B
	Y1WV98080	Left Hand Crank Arm Unit 165 mm (Silver)	B	B
2	Y1WV98090	Left Hand Crank Arm Unit 170 mm (Black)	B	B
	Y1WV98100	Left Hand Crank Arm Unit 170 mm (Silver)	B	B
	Y1WV98110	Left Hand Crank Arm Unit 172.5 mm (Black)	B	B
	Y1WV98120	Left Hand Crank Arm Unit 172.5 mm (Silver)	B	B
	Y1WV98130	Left Hand Crank Arm Unit 175 mm (Black)	B	B
	Y1WV98140	Left Hand Crank Arm Unit 175 mm (Silver)	B	B
3	Y1GS21000	Clamp Bolt with Washer (M6 x 21)	A	B
4	Y1GE98050	Plate	A	A
5	Y1F316000	Ring	A	A
	Y1P598010	Left Hand Adapter (B.C. 1.37" x 24T) English Thread (SM-BBR60)	A	A
6	Y1P598020	Left Hand Adapter (M36 x 24T) Italian Thread (SM-BBR60)	A	A
7	Y1G398150	Inner Cover & O-Ring	A	A
8	Y1TF21000	O-Ring	A	A
	Y1P598030	Right Hand Adapter (B.C. 1.37" x 24T) English Thread (SM-BBR60)	A	A
9	Y1P598040	Right Hand Adapter (M36 x 24T) Italian Thread (SM-BBR60)	A	A
10	Y1MM98100	Gear Fixing Bolt (M8 x 8.5 / 1 Unit = 4 pcs.)	A	B
	Y1WV34000	Chainring 34T-MS (Black) for 50-34T		B
	Y1WV34010	Chainring 34T-MS (Silver) for 50-34T		B
11	Y1WV36000	Chainring 36T-MT (Black) for 52-36T		B
	Y1WV36010	Chainring 36T-MT (Silver) for 52-36T		B
	Y1WV39000	Chainring 39T-MW (Black) for 53-39T		B
	Y1WV39010	Chainring 39T-MW (Silver) for 53-39T		B
	Y1WV98010	Chainring 50T-MS (Black) for 50-34T		B
	Y1WV98020	Chainring 50T-MS (Silver) for 50-34T		B
12	Y1WV98030	Chainring 52T-MT (Black) for 52-36T		B
	Y1WV98040	Chainring 52T-MT (Silver) for 52-36T		B
	Y1WV98050	Chainring 53T-MW (Black) for 53-39T		B
	Y1WV98060	Chainring 53T-MW (Silver) for 53-39T		B
13	Y13009260	TL-FC25 Adapter Installation Tool	A	A
14	Y13009270	TL-FC37 Adapter Installation Tool	A	A

A: Same parts.

B: Parts are usable, but differ in materials, appearance, finish, size, etc.

Absence of mark indicates non-interchangeability.

Specifications are subject to change without notice.

May-2018-4331A

© Shimano Inc. I

SHIMANO