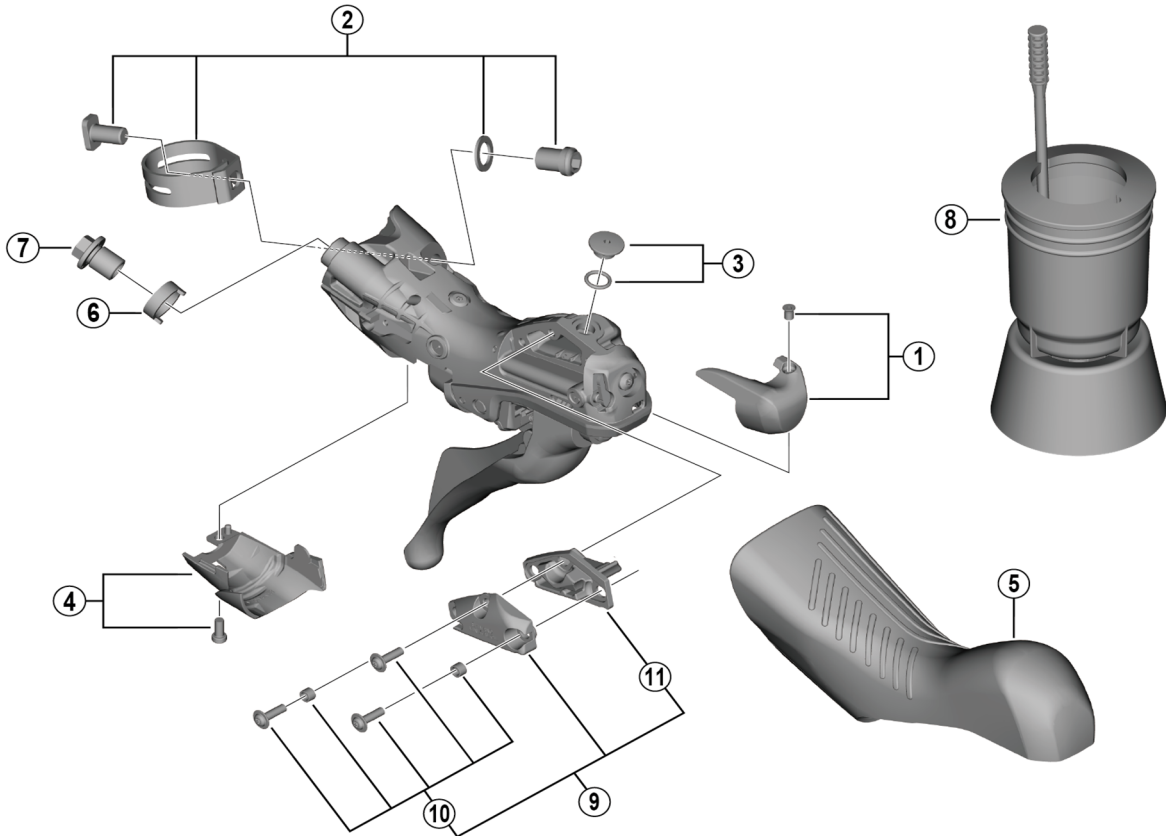


GRX Brake Lever (For Disc Brake)

BL-RX810-L
BL-RX810-L-LE



Note

There are no specific service parts for BL-RX810-L-LE.
BL-RX810-L service parts can be used for BL-RX810-L-LE.

ITEM NO.	SHIMANO CODE NO.	DESCRIPTION	INTERCHANGEABILITY	
1	Y0E198010	Left hand name plate L and fixing screw	A	
2	Y0E098030	Clamp band unit diameter (23.8 - 24.2 mm)	A	
3	Y0C698030	Bleed screw and O-ring	A	
4	Y0C598020	Left hand unit cover L and fixing screw	A	
5	Y0JK98010	Bracket covers (pair)	A	
6	Y0C514000	Joint support ring	A	
7	Y8RD02000	Flange flare nut (M9/black)	A	
* 8	Y13000090	TL-BR002 Funnel unit for M7 screw	A	
9	Y0C598030	Left hand lid unit	A	
10	Y0C698070	Lid fixing screw (3 pcs.) and lid spacer (2 pcs.)	A	
11	Y0C578000	Diaphragm L	A	

A: Same parts.

B: Parts are usable, but differ in materials, appearance, finish, size, etc.

Absence of mark indicates non-interchangeability.

Specifications are subject to change without notice.

BL-RX810-L-LE

Jun.-2022-4583C

© Shimano Inc. I

SHIMANO