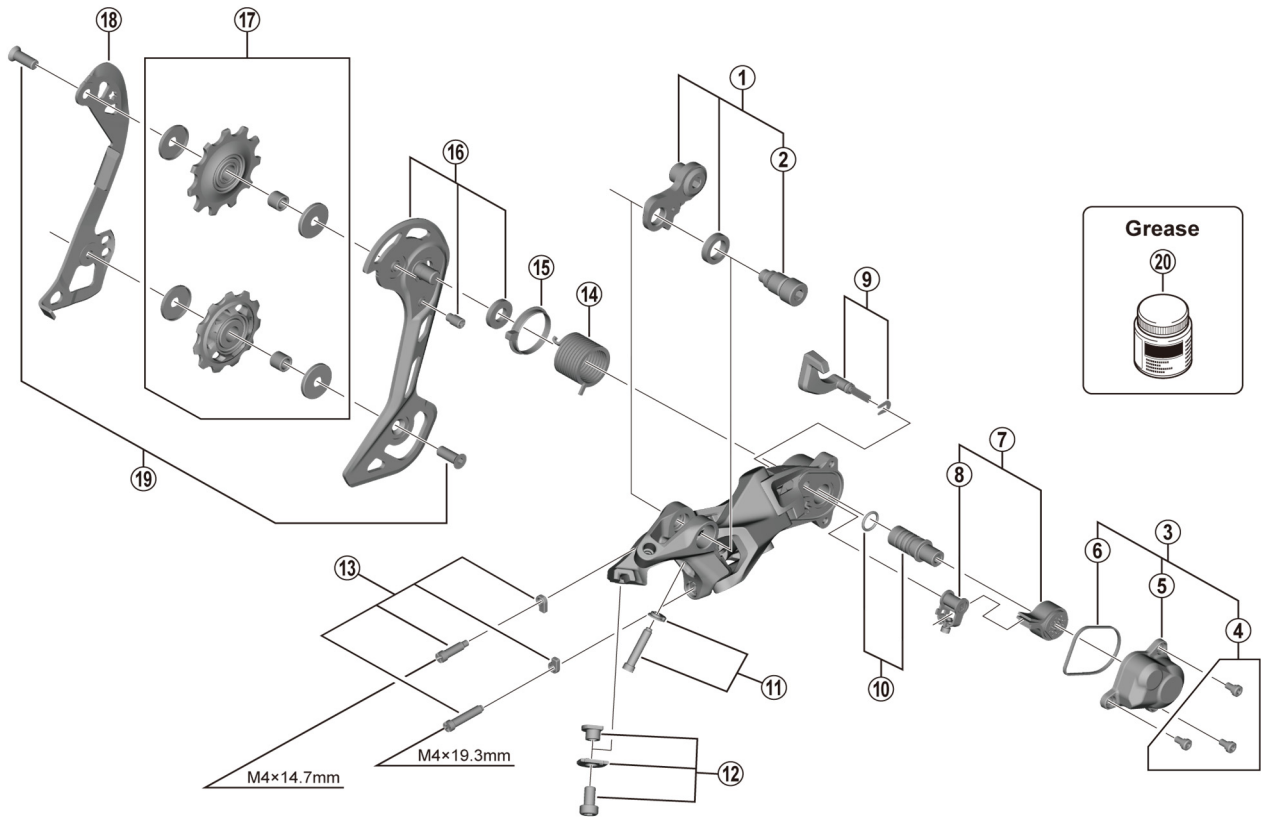


# DEORE Rear Derailleur RD-M5120-SGS 11/10-speed



ITEM NO.	SHIMANO CODE NO.	DESCRIPTION	INTERCHANGEABILITY	
			RD-M4120	RD-M6000-GS
1	Y3HM98020	Bracket axle unit (for normal type)	A	B
2	Y3HM000F0	B-axle 2 (for direct mount type)	A	
* 3	Y3HM98090	P-cover unit		
4	Y5Y198070	P-cover screw set (3 pcs.)		A
* 5	Y3HM000A0	P-cover		
* 6	Y3HM000S0	P-cover packing		
* 7	Y3HM98100	Stabilizer unit		
* 8	Y3HM98110	Cam unit		
9	Y5YX98040	Switch lever unit and fixing plate		A
* 10	Y3HM98120	P-axle and O-ring		
11	Y3HM98040	End adjust screw (M4 x 19.3) and plate	A	B
12	Y3HM98050	Cable fixing bolt unit	A	
13	Y3HM98060	Stroke adjusting screws and plate	A	B
* 14	Y3HM000M0	P-tension spring		
15	Y5PV24000	P-seal ring		A
16	Y3HM98070	Outer plate assembly (SGS)		B
* 17	Y3HM98010	Tension and guide pulley set	A	B
18	Y3HM000B0	Inner plate (SGS)	A	A
19	Y3HM98080	Pulley screw (M5 x 13.7) 2 pcs.	A	B
20	Y04121000	New grease for stabilizer (Net. 50 g)		A

A: Same parts.

B: Parts are usable, but differ in materials, appearance, finish, size, etc.

Absence of mark indicates non-interchangeability.

Specifications are subject to change without notice.

Dec.-2021-4676A

© Shimano Inc. I

# SHIMANO