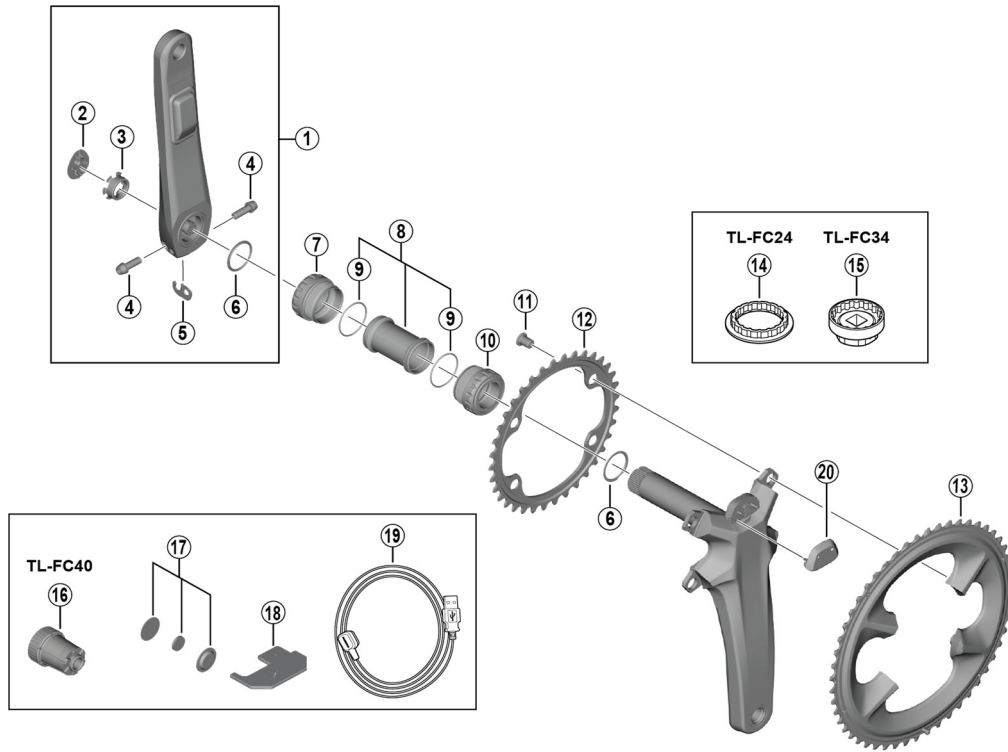


DURA-ACE Crankset FC-R9200-P BB-R9100



• Chaining teeth specification: 50-34T/52-36T/54-40T

• P.C.D. 110 mm

ITEM NO.	SHIMANO CODE NO.	DESCRIPTION
1	Y0N598010	Left hand crank arm unit 160 mm
	Y0N598020	Left hand crank arm unit 165 mm
	Y0N598030	Left hand crank arm unit 167.5 mm
	Y0N598040	Left hand crank arm unit 170 mm
	Y0N598050	Left hand crank arm unit 172.5 mm
	Y0N598060	Left hand crank arm unit 175 mm
	Y0N598070	Left hand crank arm unit 177.5 mm
2	Y0N500025	Crank arm cap
3	Y1VU00024	Left crank fixing ring
4	Y1GS22100	Clamp screw (M6 x 19) with washer
5	Y1GE98050	Plate
6	Y0MZ14000	Ring
7	Y1VR98010	Left hand cup (B.C.1.37" x 24T) english thread (BB-R9100)
	Y1VR98020	Left hand cup (M36 x 24T) italian thread (BB-R9100)
8	Y1KY98130	Inner cover and O-ring
9	Y1TF21000	O-ring
10	Y1VR98030	Right hand cup (B.C.1.37" x 24T) english thread (BB-R9100)
	Y1VR98040	Right hand cup (M36 x 24T) italian thread (BB-R9100)
11	Y1H598160	Chainring fixing screw (M8 x 10.1 / 1 unit = 4 pcs.)
12	Y0MZ34000	Chainring 34T-NK
	Y0MZ36000	Chainring 36T-NH
	Y0MZ40000	Chainring 40T-NJ
	Y0MZ98010	Chainring 50T-NK
13	Y0MZ98020	Chainring 52T-NH
	Y0MZ98030	Chainring 54T-NJ
	14	Y13009240
15	Y13009250	TL-FC34 Bottom bracket cup tool
16	YEZY00017	TL-FC40 Left hand crank arm installation tool
17	Y1VU98080	Magnet set
18	Y1VU00030	Magnet setting tool
19	IEWEC300A	EW-EC300 Charging cable
* 20	Y0N59801T	Top cover

May-2022-4810A
© Shimano Inc. I

Specifications are subject to change without notice.

SHIMANO