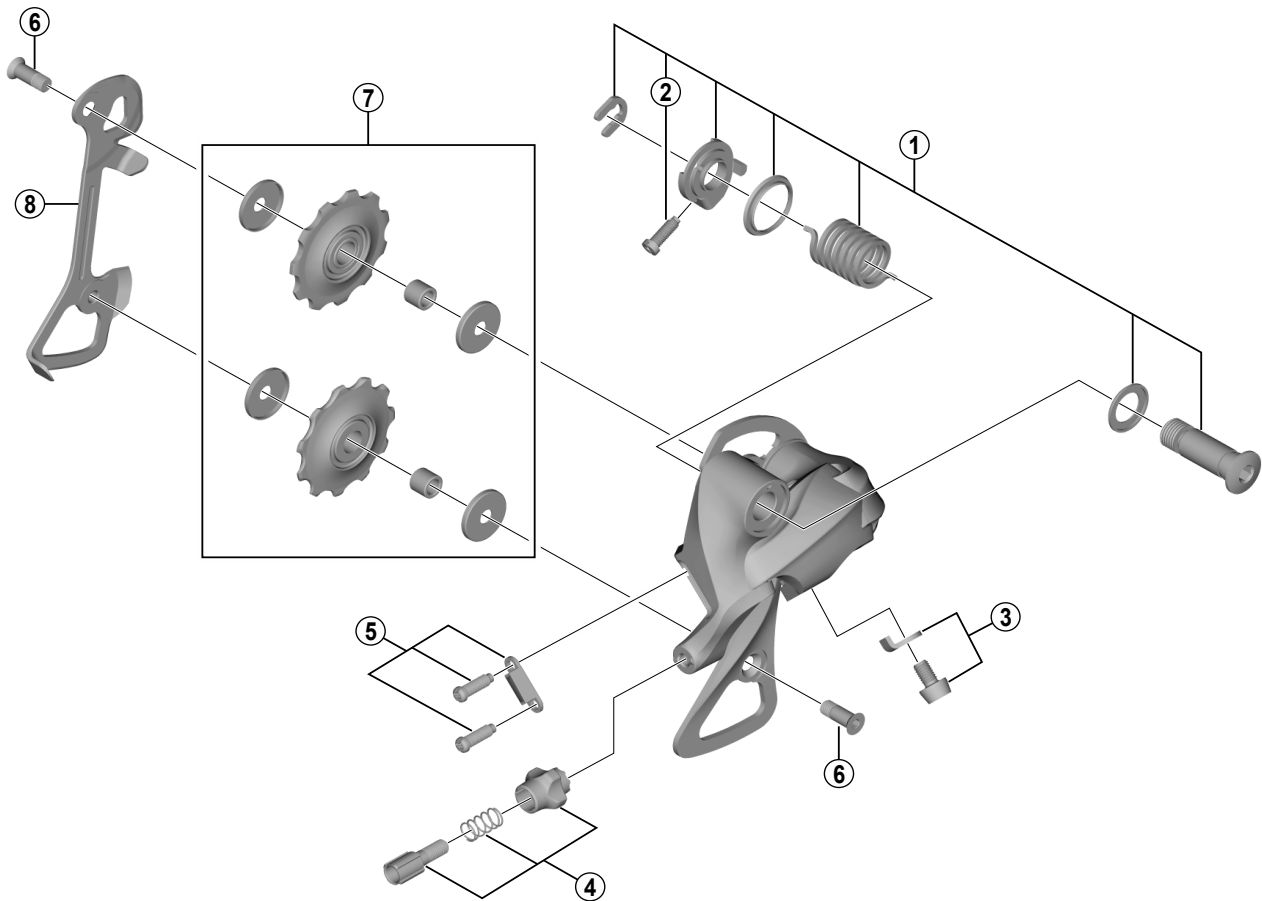


SORA Rear Derailleur RD-R3000-SS / GS (9-speed)



ITEM NO.	SHIMANO CODE NO.	DESCRIPTION	RD-4700 RD-3500	
			INTERCHANGE-ABILITY	
1	Y5Y998010	B-Axle Assembly		A
2	Y556250D0	B-Tension Adjusting Screw	B	A
3	Y5Y498020	Cable Fixing Bolt & Plate		A
4	Y5XG98040	Cable Adjusting Bolt Unit	B	A
5	Y5Y498030	Stroke Adjusting Screws (M4 x 13) & Plate		A
6	Y5XG16100	Pulley Bolt		A
7	Y5FT98030	Tension & Guide Pulley Set		A
8	Y5Z000090	Inner Plate (SS-Type)		
	Y5Z000080	Inner Plate (GS-Type)		

A: Same parts.

B: Parts are usable, but differ in materials, appearance, finish, size, etc.

Absence of mark indicates non-interchangeability.

Specifications are subject to change without notice.

Mar.-2016-3973

© Shimano Inc. I

SHIMANO